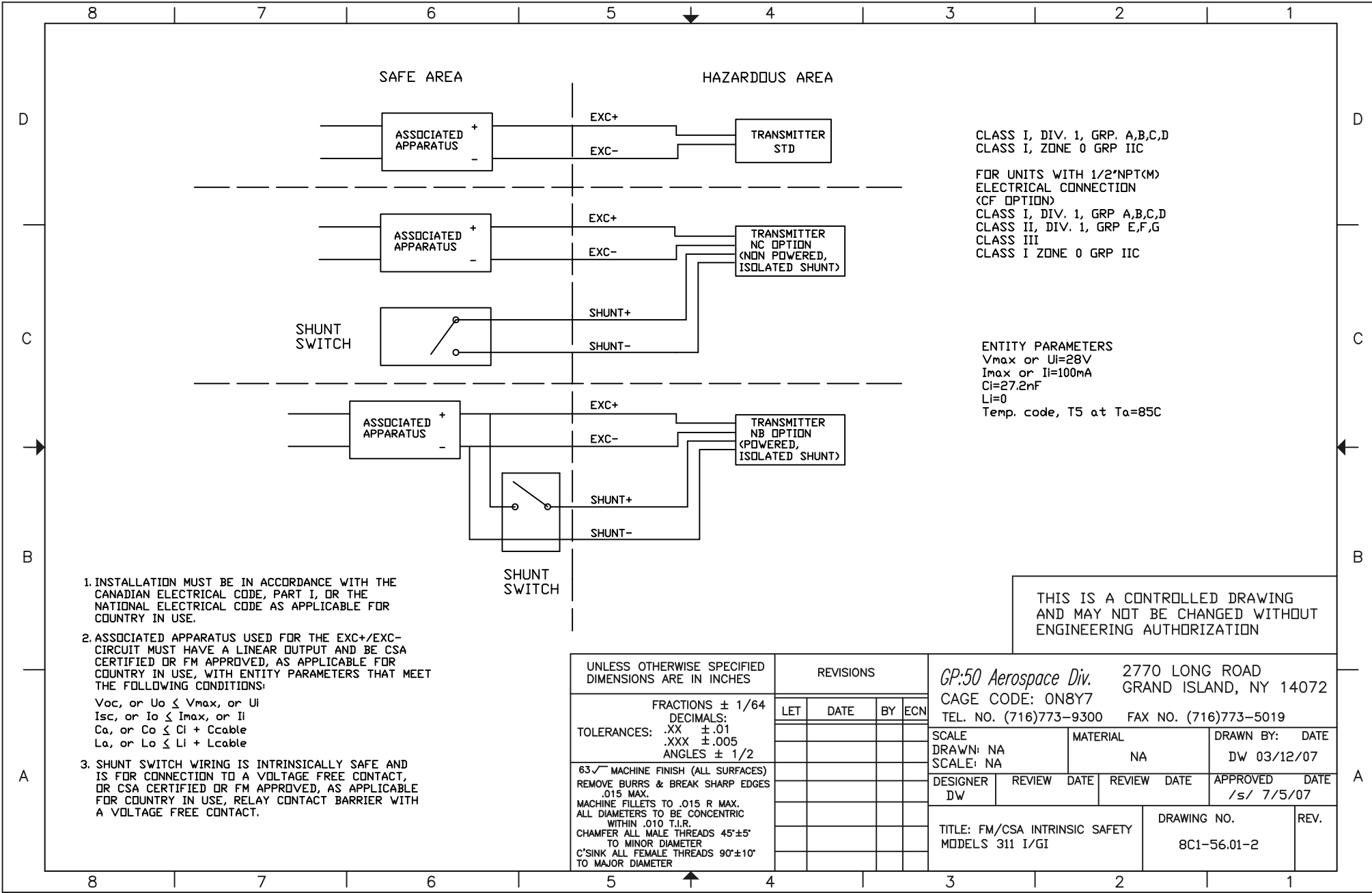


THIRD PARTY AGENCY APPROVAL CODE: I-S



CLASS I, DIV. 1, GRP. A,B,C,D
 CLASS I, ZONE 0 GRP IIC

FOR UNITS WITH 1/2"NPT(M)
 ELECTRICAL CONNECTION
 (CF OPTION)
 CLASS I, DIV. 1, GRP A,B,C,D
 CLASS II, DIV. 1, GRP E,F,G
 CLASS III
 CLASS I ZONE 0 GRP IIC

ENTITY PARAMETERS
 V_{max} or $U_i = 28V$
 I_{max} or $I_i = 100mA$
 $C_i = 27.2nF$
 $L_i = 0$
 Temp. code, T5 at $T_a = 85C$

1. INSTALLATION MUST BE IN ACCORDANCE WITH THE CANADIAN ELECTRICAL CODE, PART I, OR THE NATIONAL ELECTRICAL CODE AS APPLICABLE FOR COUNTRY IN USE.
2. ASSOCIATED APPARATUS USED FOR THE EXC+/EXC- CIRCUIT MUST HAVE A LINEAR OUTPUT AND BE CSA CERTIFIED OR FM APPROVED, AS APPLICABLE FOR COUNTRY IN USE, WITH ENTITY PARAMETERS THAT MEET THE FOLLOWING CONDITIONS:
 V_{oc} , or $U_o \leq V_{max}$, or U_i
 I_{sc} , or $I_o \leq I_{max}$, or I_i
 C_a , or $C_o \leq C_i + C_{cable}$
 L_a , or $L_o \leq L_i + L_{cable}$
3. SHUNT SWITCH WIRING IS INTRINSICALLY SAFE AND IS FOR CONNECTION TO A VOLTAGE FREE CONTACT, OR CSA CERTIFIED OR FM APPROVED, AS APPLICABLE FOR COUNTRY IN USE, RELAY CONTACT BARRIER WITH A VOLTAGE FREE CONTACT.

THIS IS A CONTROLLED DRAWING AND MAY NOT BE CHANGED WITHOUT ENGINEERING AUTHORIZATION

UNLESS OTHERWISE SPECIFIED DIMENSIONS ARE IN INCHES	REVISIONS				<i>GP:50 Aerospace Div.</i> 2770 LONG ROAD GRAND ISLAND, NY 14072 CAGE CODE: ON8Y7 TEL. NO. (716)773-9300 FAX NO. (716)773-5019			
	LET	DATE	BY	ECN				
FRACTIONS $\pm 1/64$ DECIMALS: TOLERANCES: .XX $\pm .01$.XXX $\pm .005$ ANGLES $\pm 1/2$					SCALE DRAWN: NA SCALE: NA	MATERIAL NA	DRAWN BY: DATE DW 03/12/07	
63 \sqrt MACHINE FINISH (ALL SURFACES) REMOVE BURRS & BREAK SHARP EDGES .015 MAX. MACHINE FILLETS TO .015 R MAX. ALL DIAMETERS TO BE CONCENTRIC WITHIN .010 T.I.R. CHAMFER ALL MALE THREADS 45 \pm 5' TO MINOR DIAMETER C'SINK ALL FEMALE THREADS 90 \pm 10' TO MAJOR DIAMETER					DESIGNER DW	REVIEW DATE	REVIEW DATE /s/ 7/5/07	APPROVED DATE
					TITLE: FM/CSA INTRINSIC SAFETY MODELS 311 I/GI		DRAWING NO. 8C1-56.01-2	REV.